



## MEETING AGENDA

### **VICKERY COMMUNITY CONSULTATIVE COMMITTEE**

Meeting Date: 4 October, 2018  
Meeting Venue: Whitehaven Office Gunnedah Conadilly  
Meeting Time: 11.30am – 1.30pm (Lunch provided)

Invitees:-  
Roberta Ryan, Independent Chair  
Sandra Spate, Minute taker  
Cr Robert Hooke, Gunnedah Shire Council (GSC) Rep  
Cr Ann Luke, Gunnedah Shire Council (GSC) Alternate Rep  
Cr Cameron Staines, Narrabri Shire Council (NSC) Rep  
Cr Lloyd Finlay, Alternate NSC Rep  
Keith Blanch , Community Representative  
Ron Fuller, Community Representative  
Grant McIlveen, Community Representative  
Barry Thomson, Community Representative  
Brian Cole, Executive General Manager – Project Delivery – WHC  
Daryl Campbell, Community Relations Officer - WHC

## ITEMS

1. Present, introductions and apologies
2. Declaration of pecuniary or other interests
3. Previous minutes
4. Vickery Extension Project – EIS Update
5. EIS Assessment Process
6. General business
7. Date and agenda for next meeting

## Minutes of the 7<sup>th</sup> Meeting of the Vickery Project Community Consultative committee

---

**Meeting held:** 4 October 2018 – 11.30am-1.30pm

**Venue:** Whitehaven Office Gunnedah Conadilly

**Present:**

Roberta Ryan (RR)	Independent Chair
Sandra Spate (SS)	Minute taker
Cr Collen Fuller (CF)	Gunnedah Shire Council (GSC)
Ron Fuller (RF)	Community Representative
Grant McIlveen (GM)	Community Representative
Brian Cole (BC)	Executive General Manager, Project Delivery, WHC
Daryl Campbell	Community Relations Officer - WHC

**Apologies:**

Cr Cameron Staines (CS)	Narrabri Shire Council (NSC)
Cr Robert Hooke (RH)	Gunnedah Shire Council (GSC)
Keith Blanch (KB)	Community Representative
Barry Thomson (BT)	Community Representative
Cr Lloyd Finlay	Narrabri Shire Council (NSC)
Tim Muldoon	Group Manager Community Relations and Property, WHC

Item	Description	Action/ Responsibility
<b>1</b>	<b>Present, introductions and apologies</b>	
1.1	BC noted changes to council representation due to recent mayoral elections. Cameron Staines, who is an apology for this meeting, will represent Narrabri Shire Council. Apologies are as listed above.	
<b>2</b>	<b>Declaration of pecuniary or other interests</b>	
2.1	There were no new members present. Previous members have made declarations.	
<b>3</b>	<b>Previous minutes</b>	
3.2	Action 2.1 August 2018. RR to email pecuniary interest declarations to new members. This was done. The action is closed.	
3.3	Action 4.1 August 2018. EC will follow up on regulations around firebreaks in the rehabilitated area. BC reported he was advised this has been done. BC will confirm this is the case.	
3.4	Action 7.16 August 2018. TM to respond to the question proximity of neighbours to Maules Creek in relation to coal into hoppers. This action remains open.	Action 7.16 August 2018 remains open to be addressed at the next meeting.
3.5	Acceptance of the minutes from the August 2018 was moved by GM and seconded by BC. The minutes were accepted.	
<b>4.0</b>	<b>Vickery Extension Project – EIS Update</b>	
4.1	BC reported the Environmental Impact Statement (EIS) went on exhibition on 13 September for six weeks. Hard copies were available at the meeting and are available to the community at Whitehaven's office and the Department of Natural Resources. Copies have been provided to councils. The EIS is also available on USB drives and on the Department of Planning website.	

## Minutes of the 7<sup>th</sup> Meeting of the Vickery Project Community Consultative committee

	<p>A site visit was undertaken by agencies such as Office of Environment and Heritage, RMS, Department of Industry, Department of Environment and Energy and the two councils. This was followed in the evening by a public meeting on 26 September at Boggabri Golf Club attended by approximately 60 people.</p> <p>Feedback has been received from the two councils that a few people have visited places where the documents are on display.</p> <p>Whitehaven will continue to talk with the community.</p> <p>Agency feedback to DPE is expected by 18 October. On the basis of feedback, DPE will produce an Issues Paper which then goes to the Independent Planning Commission (IPC). BC understands the Minister for Planning has requested a public hearing.</p>	
	<p>GM reported Mike Young and Steve O'Donoghue presented on the project on behalf of the Department of Planning at the public meeting. He noted minutes weren't taken.</p>	
4.2	<p>RR explained the IPC takes over from the former Planning Assessment Commission (PAC) with a new role focusing on mining approvals. Decisions are appealable in the courts as previously although merit appeals are not possible if a public hearing is conducted.</p> <p>GM asked if there is a predetermined group on the panel.</p> <p>RR and BC replied there is a list of potential panellists on the Department of Planning website with the final panel chosen according to expertise.</p>	
4.3	<p>GM reported attendees at the public meeting asked for an extension of the submissions period to 90 days as with the Santos project.</p> <p>RF indicated that he understood the 90 days was based on farmers engaged drought related activity. The Department extended it from the minimum of 28 days then 42 days. A public hearing will provide a further opportunity for community input.</p> <p>GM said the request was also from those seeking an independent water assessment.</p>	
4.4	<p>RF asked how much of the Vickery project is in the Boggabri Shire. BC replied approximately 20% is in the Narrabri Shire. [BC1]</p>	
4.5	<p>BC presented the Vickery Extension Project Update (attached to minutes).</p> <p>He noted Whitehaven's contribution to Indigenous employment with a minimum 10% target for Indigenous employment at Vickery.</p>	
4.6	<p>GM asked whether there are targets for apprenticeships to keep kids in the area.</p> <p>BC said this could be looked at.</p>	
4.7	<p>RR sought clarification that Whitehaven is seeking to extend approval from 4.5Mtpa (million tons per annum) to an average of 7.2Mtpa.</p> <p>BC replied 4.5Mtpa was predicated on trucking coal to the Gunnedah plant. Whitehaven is proposing to step away from trucking coal on Bluevale Road and lift output. It will have a processing plant on site and bring coal to the site from Tarrawonga. The rail spur is to take coal to the main rail line. Countries such as Japan, Taiwan and Korea put a premium on higher energy coal such as that in the Gunnedah basin. He named some overseas companies which have an interest. 185 million tons was expected to be mined but after stepping away from Blue Vale this is will be reduced to 179 million tonnes.</p> <p>GM asked whether those overseas companies are partners.</p> <p>BC replied they are not at this time.</p>	
4.8	<p>GM asked whether the rail spur lay down areas would be permanent. BC replied they would not. They are for construction equipment.</p>	
4.9	<p>GM asked whether there would be embankments or would it be fully elevated as at Gins Lean. While viaducts are shown at the highway, it</p>	

## Minutes of the 7<sup>th</sup> Meeting of the Vickery Project Community Consultative committee

	<p>isn't clear what will happen in the west other than Whitehaven saying it is elevated.</p> <p>BC replied that west of the highway would be elevated on some form of piers. The intention is to elevate the rail spur. Modelling assumes the majority is elevated on piers of some form.</p>	
4.10	<p>BF asked whether Ewings ever flooded.</p> <p>BC replied flood modelling shows Ewings property has an elevated section which is less likely to flood.</p>	
4.11	<p>BF asked whether there will be a ramp for the rail over the highway as at Boggabri.</p> <p>BC replied these details will be resolved in the final design. There will be a similar elevation over the highway as at Maules Creek but clearance need not be as high at the river.</p>	
4.12	<p>GM asked how flood modelling can have been done when work on the final design hasn't been. He is worried by the rail crossing the floodplain and modelling being from the 1955 flood when the 1984 levels were higher. Infrastructure has been added such as the box culvert at the lagoon.</p> <p>BF suggested if there is work to be done such as pipes being required under ramps, this should be addressed now.</p> <p>BC replied flood modelling generated designs specified in the Flood Management Plan with the rail spur superimposed on the floodplain. It allows for openings which satisfy Flood Management Plan requirements. Work has been done by WRM which is widely recognised as experienced in flood plain management. WRM's work was peer reviewed by an independent hydrologist who deemed it to be satisfactory. Department of Planning and Environment will also review this.</p>	
4.13	<p>GM asked what type of water and what quantities of water are expected from the bore field.</p> <p>BC replied it wouldn't be large quantities. Modelling shows it will only potentially be needed in the first few years. It would be a few hundred megalitres at most, with say 10 to 15 from each bore. Modelling showed the ability to source groundwater with minimal impact on nearby bores.</p>	
4.14	<p>GM asked whether Whitehaven could guarantee there will be 450 jobs. He read from the website of a company involved in autonomous trucks that advised labour costs are reduced, meaning people are not employed. He is worried that if autonomous trucks are introduced in 5 to 7 years people will lose jobs.</p> <p>BC cited figures of people who are employed at various mines, some of which are using autonomous trucks. He said the 450 jobs is a conservative estimate based on numbers working in other mines in the area. Autonomous equipment doesn't reduce manpower but increases hours of operation.</p> <p>BF suggested if estimates on jobs are incorrect economic predictions would also be incorrect.</p> <p>Subsequent to the meeting BC was able to verify employment levels at local mines. These are:-</p> <ul style="list-style-type: none"> <li>- Boggabri Mine – 892 FTE</li> <li>- Maules Creek - 793 FTE</li> <li>- Tarawonga - 247 FTE</li> </ul> <p>Where FTE = full time equivalent employees.</p> <p>These figures confirm that employment projections for Vickery are conservative.</p>	

## Minutes of the 7<sup>th</sup> Meeting of the Vickery Project Community Consultative committee


4.15	RR noted community concerns but stressed that if approved Conditions of Consent would need to be met. The CCC has an oversight role in ensuring implementation of conditions of consent.	
4.16	<p>BC noted the EIS process endeavours to make projections of impacts and take reasonable and feasible actions to minimise impacts. There are flood records for 120 years and there have been changes to irrigation. Flood modelling, which is on the conservative side, has been checked against observations. He has been reassured about modelling when talking to property owners about the height of levees. The rail spur has been designed to allow floodwater to pass under.</p> <p>GM asked how Whitehaven knows the height of farmers' levees. BC and RR replied land surveys are public information.</p> <p>GM suggested neighbours in close proximity to the rail are worried about flooding, if for example trees and debris act as a dam between stanchions.</p> <p>BC replied Maules Creek could be used as an actual example of what it may look like although the Vickery rail spur will generally be at a lower elevation. People on properties referred to are downstream of the rail spur. In the unlikely event of some build up in flood water, this would occur upstream.</p> <p>RF asked how far apart stanchions are at Boggabri. BC replied 30m.</p> <p>GM suggested people are confused that modelling has been done with no detailed design.</p> <p>RF suggested Whitehaven would be unlikely to spend millions of dollars on something that may be washed out such as happened at Nyngan.</p> <p>CF noted more thorough modelling had been conducted since the Queensland floods and Nyngan.</p> <p>RR said the detailed design e.g. the actual final width of the gaps hasn't been worked out yet. That will occur during the design optimisation phase. There won't be any detailed design until the project is approved. Approval agencies can request changes. There will be engagement with this group and the community once approval has been received with the CCC will be consulted at various stages. Detailed design is presented to key stakeholders including the CCC. The CCC plays no role in the approval process or setting conditions, but once it is approved the CCC plays a role in ensuring conditions of consent are met. For us the real work starts once approval has been given. The government can engage their own experts and everything is peer reviewed. Experts have to be independent. The IPC will decide on approval. Our role is not whether it is approved but as a group to oversight implementation of conditions of consent. The current process is for information.</p> <p>GM thanked RR for her clarification.</p>	
4.17	<p>GM noted the issue of noise from coal hoppers raised at the last meeting. BC had said he was unaware of complaints regarding the ROM hoppers, he thought the complaints related to the TLO. GM has since spoken to neighbours at Maules Creek who said hoppers are one of the main noise complaints due to coal being loaded into the hopper prior to crushing. Neighbours 2 to 5kms away can hear it. At Vickery the nearest house is 1,600m from infrastructure. He noted when the project was first approved operations tended to be in the north away from properties but are now in the south closer to receptors.</p> <p>BC said the noise modelling parameter is LEQ/15mins (equivalent continuous sound level over 15 minutes). Loading into the hopper would produce a spike. A sound power level is assigned to all equipment and noise generating sources. A topographical model shows key receivers over time. The model predicts noise levels at receivers. Project specific noise levels are based on the project specific noise levels which for this</p>	

**Minutes of the 7<sup>th</sup> Meeting of the  
Vickery Project Community Consultative committee**

	<p>project is 35dB. For the mining Voluntary Land Acquisition and Mitigation Policy receivers at 35, 36 or 37 decibels are considered OK. For 38 to 40 regulators may say receivers are eligible for mitigation such as double glazing. In excess of 40dB landholders the regulators may grant the landholder acquisition on request status. There is an obligation to minimise impacts reasonably and feasibly. There is noise suppression on equipment at Maules Creek, berms act as noise barriers, and there are winter shut downs during inversions.</p> <p>RR noted there is live noise monitoring during operations and penalties for exceedances. At each CCC meeting the company will be required to report on noise levels and complaints. These also be publicly reported and penalties are built in which the proponent will be keen to avoid. There is a need to ensure compliance.</p> <p>BC said there has been detailed modelling and mitigation steps. It would be silly to go forward if the mine has to shut continually. Whitehaven will endeavour to minimise noise. Noise modelling has been peer reviewed and the Department of Planning has in-house experts. Predictions are based on worst case scenario. At Maules Creek monitoring is in real time including the middle of the night. Inversions between 2.00am and 7.00am of they occur often produce the worst case. To ensure limits aren't exceeded it isn't unusual to shut down operations for up to 6 to 7 hours during the winter.</p> <p>GM asked for the total number of hours shut down Maules Creek experienced over winter.</p> <p>BC will take the question on notice.</p>	<p>BC to provide figures for the total number of shut down hours experienced by Maules Creek over winter.</p>
4.18	<p>GM asked how often the Tarrawonga CCC meets.</p> <p>CF replied it meets every second month.</p> <p>RR noted meeting schedules can be determined by periods of potential impacts and the CCC can meet more frequently when required.</p>	
4.19	<p>RR asked what the next steps are for the EIS.</p> <p>BC said after the exhibition period an issues paper prepared by DPE goes to the IPC. The IPC holds a public hearing and produces a hearing report. Whitehaven responds then DPE issues a report. Whitehaven has been advised verbally that the public hearing is likely to be late November of early December. The IPC hearing report is likely to be issued in January/February 2019, Whitehaven then responds to submissions. DPE produces a whole of government assessment report then IPC holds a final hearing. The final determination may occur in the second half of next year.</p>	
<b>5</b>	<b>General Business</b>	
5.1	<p>GM asked whether there are joint sittings of all mine CCCs.</p> <p>CF replied there aren't but there is now an EPA council which is an over-body and includes CCCs.</p> <p>GM asked whether this would be considered for this CCC.</p> <p>RR replied it would depend on conditions of consent. The CCC's role is not oversight of the company but about implementation of conditions of consent.</p>	
5.2	<p>GM asked if land owned by Whitehaven at Boggabri but not used by Whitehaven could be opened up for industrial uses.</p> <p>BC knows there are aspirations in the community but there have been no formal approaches to Whitehaven who would of course consider any approach but it would have to be viable and have local government support.</p> <p>GM was hoping for Whitehaven to initiate something.</p> <p>BC said Boggabri Business and Community Progress Association could approach Whitehaven with involvement of Narrabri Council.</p> <p>RF supports the move. Trucks should be able to be serviced in the local area.</p>	

**Minutes of the 7<sup>th</sup> Meeting of the  
Vickery Project Community Consultative committee**

---

<b>7</b>	<b>Date and agenda for next meeting</b>	
	To be confirmed.	
	<p><b>These minutes have been endorsed by the meeting Chair</b></p> <p><b>Signed:</b>  <b>Date: 23.10.2018</b></p>	

---

# Whitehaven Coal Limited

VICKERY EXTENSION PROJECT | EIS BRIEFING  
VICKERY CCC

October, 2018





# About Whitehaven Coal

Whitehaven Coal has a proud history in the Gunnedah Basin where our mines, local investments, workforce and community contributions are centred.

We are the largest non-government employer in the region with a workforce of approximately 1,500, 75% of whom live locally.



# Community Contribution

We have invested

**\$1bn**

in the North West NSW economy since 2012



**\$12m**

in annual salaries to Indigenous workforce flowing back into communities



We made payments in FY2017 of

**\$159.4m**

to our employees in wages and superannuation



**\$3.5m**

in voluntary planning agreements payments last year for local community infrastructure



In the past year we made

**90**

donations to community groups



**\$171.9m**

in royalties paid to the NSW Government in FY2017



We worked with more than

**350**

local suppliers during the past year



**75%**

Around three quarters of our workforce live in the area of our operations, supporting the local economy



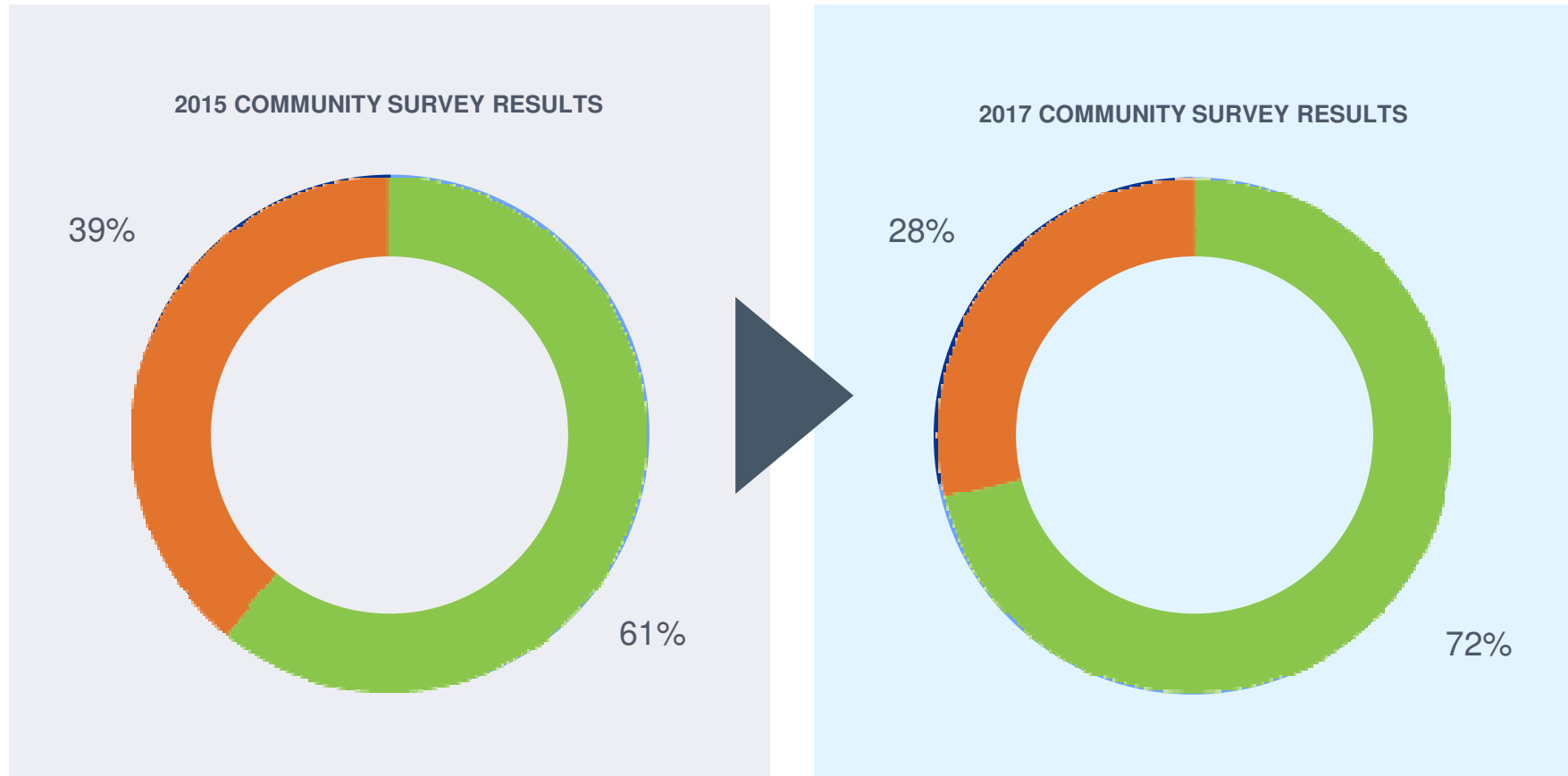
**11%**

of employees self-identify as Aboriginal or Torres Strait Islander people



# Community Views of Whitehaven

SINCE WHITEHAVEN BEGAN INDEPENDENT COMMUNITY RESEARCH IN 2015, LOCAL SUPPORT HAS GROWN SUBSTANTIALLY



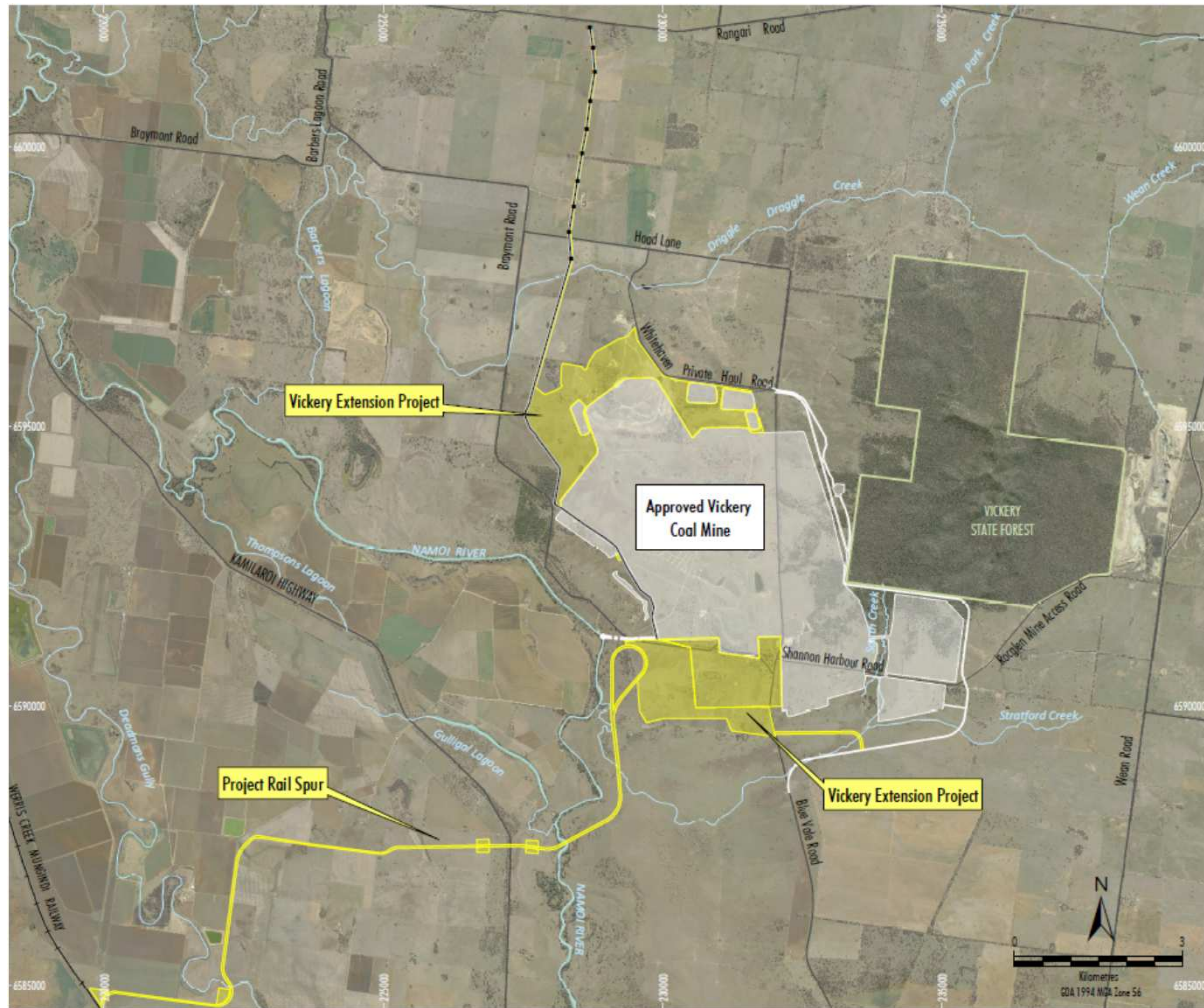
Source: Newgate Communications Pty Limited Research

# Background - Vickery Extension Project



- **The Vickery Coal Mine is already approved (2014)** as a 4.5Mtpa open cut coal mining operation, located approximately 15 km south east of Boggabri.
- **The Project site has previously been extensively mined and there is no high value agricultural land on the site**
- Whitehaven is seeking approval for increased average run rate of 7.2Mtpa over 25 years.
- The Project involves the construction and operation of an on-site CHPP, train load-out facility, rail loop and rail spur.
- Access agreements are in place with private landholders along rail spur.
- The project will deliver additional jobs and business for the Gunnedah Shire.
- The Gunnedah Basin produces some of the highest quality coal in the world.

# Background - Vickery Extension Project



The scale of the Vickery Extension Project footprint is marginally larger than the Approved Mine footprint.

Coal resource increased to include Vickery South – from approx. 135Mt to 179Mt.

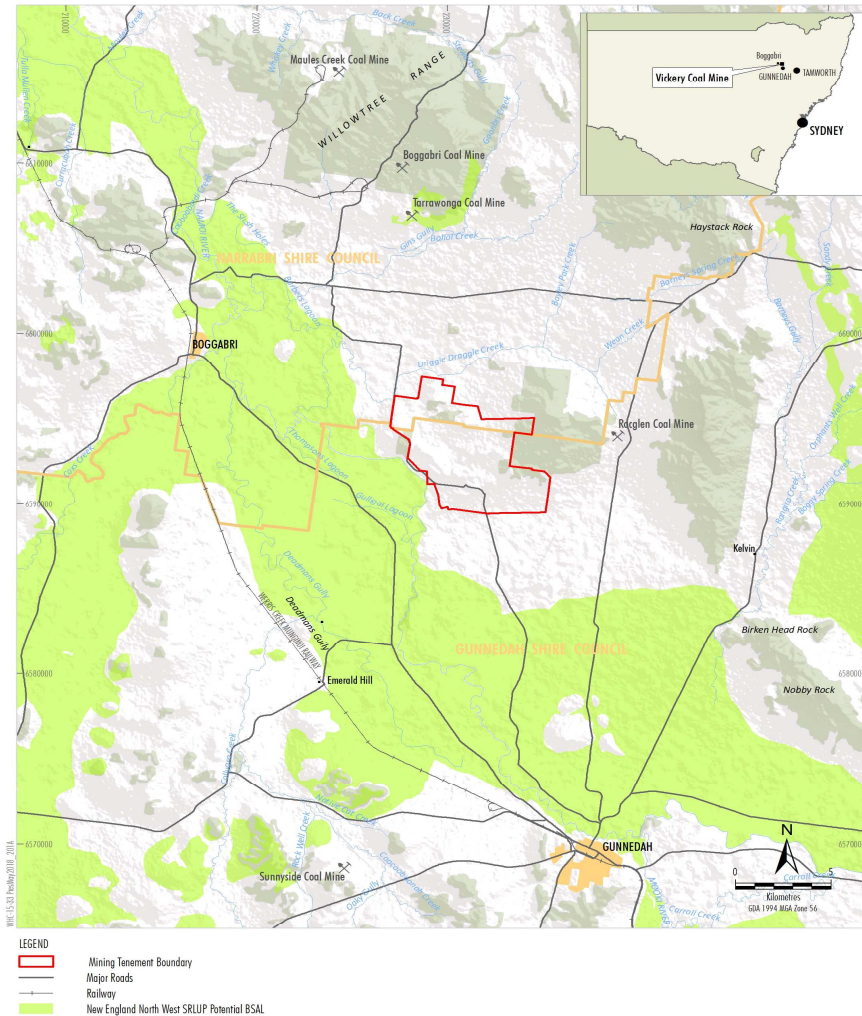
Mine run rate increases from 4.5Mtpa to average of 7.2Mtpa.

Scope includes rail spur and on site coal processing which provides a superior environmental outcome.

# Agriculture

## NO SIGNIFICANT IMPACT

- The project had to navigate the Gateway Process established to manage conflict between high quality agricultural land and large mining projects and CSG.
- No regionally mapped Biophysical Strategic Agricultural Land (BSAL) within Project area
- Much of the land within the mining footprint has been previously mined and rehabilitated
- Project area consists of lower quality grazing land



Source: LPMA - Topographic Base (2010); NSW Department of Industry (2015)

**WHITEHAVEN COAL**  
VICKERY EXTENSION PROJECT  
Regional Location and  
Regionally Mapped BSAL

# Project Economic Benefits

## Local region

- The project will generate approximately:
  - 500 jobs during the construction phase, and
  - 450 jobs during operations (the majority assumed to reside in GSC).
- It will deliver significant financial benefits to the local economy, including:
  - \$220m (NPV) incremental disposable income benefit to local communities
  - Over \$3m in incremental shire rates
  - Flow on benefits of \$90m and 50 FTE jobs in the local community

## NSW

The project will deliver significant net benefits over the 25 year life of over \$1.2billion (NPV) to NSW including:

- Some \$670m (NPV) in royalty payments for the people of NSW
- Incremental company tax benefit of over \$120m (NPV)
- Incremental disposable income payments over \$270m (NPV)
- Other benefits to NSW of some \$90m (NPV)
- Flow on benefits in excess of \$400m (NPV) and some 320FTE jobs.

# Environmental Impact Statement findings

**Based on some sixteen independent specialist assessments to satisfy the Project SEAR's** including groundwater, surface water, flood, noise and blasting, air quality and greenhouse gas, ecology and biodiversity, cultural heritage, traffic, **the EIS shows Whitehaven can operate and develop the project safely with minimal impact on the environment.** Key assessments have been peer reviewed by independent specialists,

- The Project will not impact high value agricultural land
- Coal trucks will be taken off Blue Vale Road and Kamlaroi Highway when Vickery CHPP is fully commissioned.
- No further property acquisition is required for noise or air quality impacts.
- Imperceptible impacts on groundwater and surface water on the Namoi River
- Air quality impacts are within established thresholds
- Rail line is consistent with the provisions of the Namoi Floodplain Management Plan (FMP)
- Biodiversity impacts are modest and can be offset
- Site will be rehabilitated with increased woodland to enhance biodiversity value.
- Three existing mine voids will be filled as part of the project.

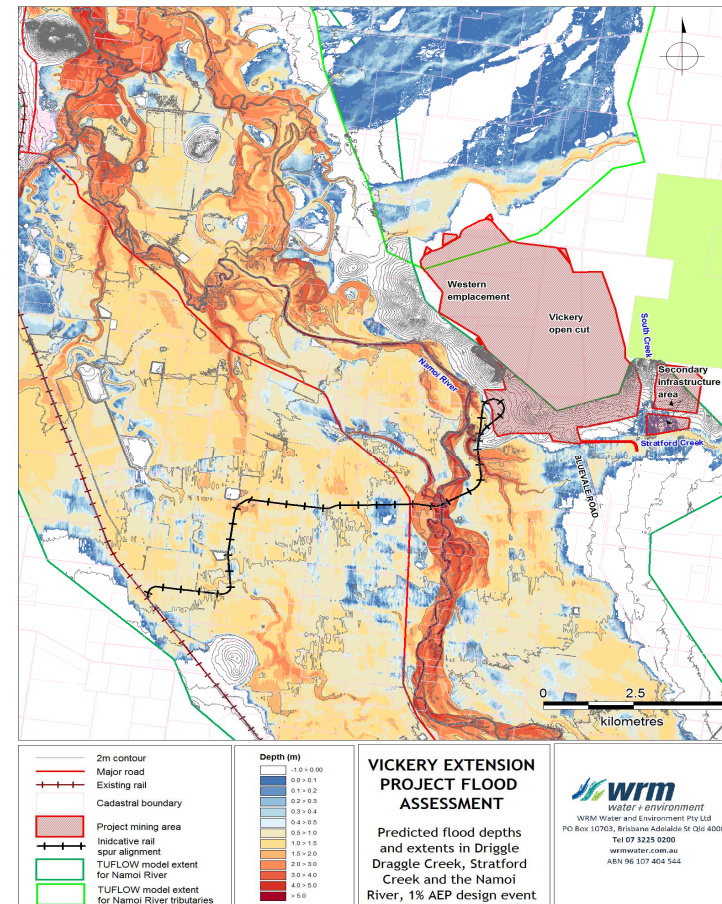
All assessments will be made available to the public on the [Whitehaven Coal website](#)



# Rail Spur - flooding

Traversing the floodplain brings with it strict obligations to not impact flood flow. The Floodplain Management Plan imposes set criteria to be met.

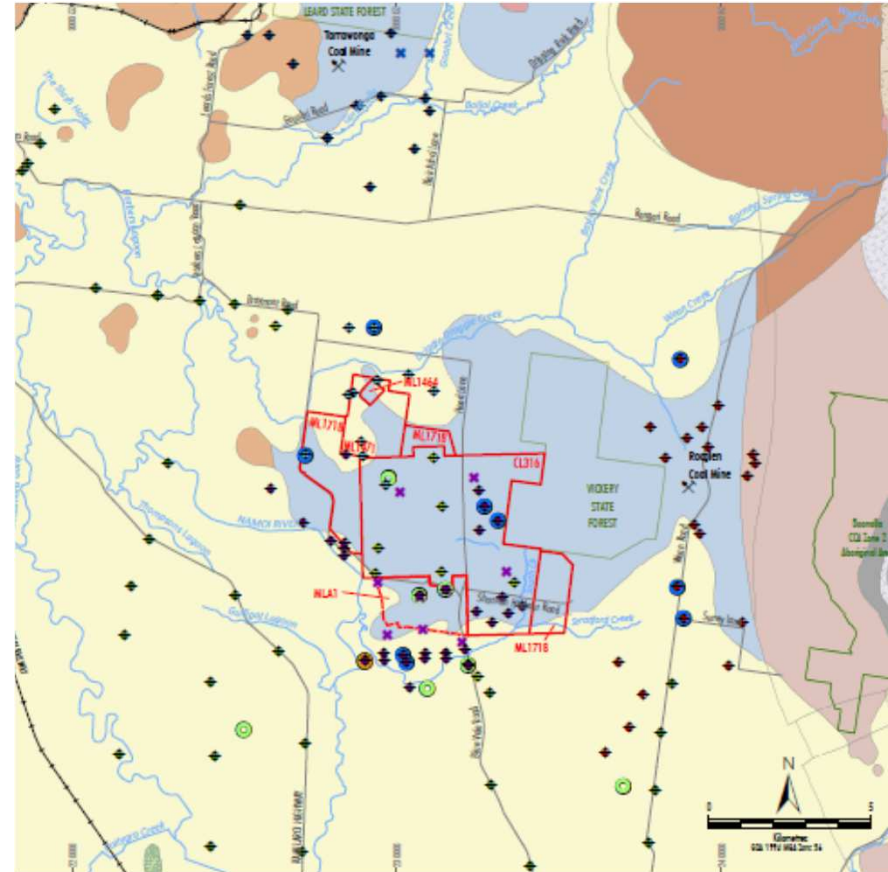
- There is considerable experience of flooding impacts across the floodplain.
- Several large floods have been recorded and the experience provides a sound basis for projections of impacts.
- It is a requirement of the FMP that large floods are considered.
- Modelling has been discussed with OEHL.
- Much of the rail spur will be designed to be elevated to pass through flood flows.



# Groundwater

Water is a significant natural resource in the Gunnedah Basin. Water resources include groundwater and surface water in the Namoi River

- Whitehaven commissioned a rigorous, robust, independent and peer reviewed ground water assessment as part of the EIS
- The Vickery Extension Project (VEP) is located within a hard rock “island” of the Maules Creek Formation, encircled by alluvium that provides the source of most of the groundwater utilised in the Vickery area
- Impacts on groundwater are regulated by the NSW Government’s Aquifer Interference Policy (AIP)
- The modelling predicts that no privately owned bores surrounding the VEP will experience greater than “minimal impact” as defined in the AIP during mining operations
- There is a small predicted increase in river leakage to the reach of the Namoi River to the immediate west of the VEP mining area which would be imperceptible compared with normal river flow



# Surface Water

- No mine water will be released to downstream watercourses
- A water balance model has been created to permit an assessment of the risk of a water shortfall or discharge at any point in the mine life.
- The water balance model utilises 125 years of rainfall records.
- The modelling considers the progressive development of the mine over the mine life combined with 100 climate scenarios representing all the different sequences represented in the historic climate record.
- Sediment dams designed and operated to manage sediment-laden runoff in accordance with best practice management and EPL requirements
- The proposed water management systems for the mine are not expected to result in any change in water quality in neighbouring creeks
- Water extraction from Namoi River and groundwater bores in accordance with access licenses

# Noise Impacts from Mining

Noise impacts are one of the areas that must be assessed.

- Because of the passage of time the EIS has been in play, the noise policy has changed.
- When the SEAR's were updated, compliance with the Noise Policy for Industry was applied.
- Modelling was repeated in line with the Policy.
- More complex than under the previous Industrial Noise Policy.
- Lessons from other mines have been applied.
- No additional properties within noise affected zone.



Noise Policy for Industry

# Noise Impacts from Rail

Noise impacts relating to the rail spur also need to be assessed.

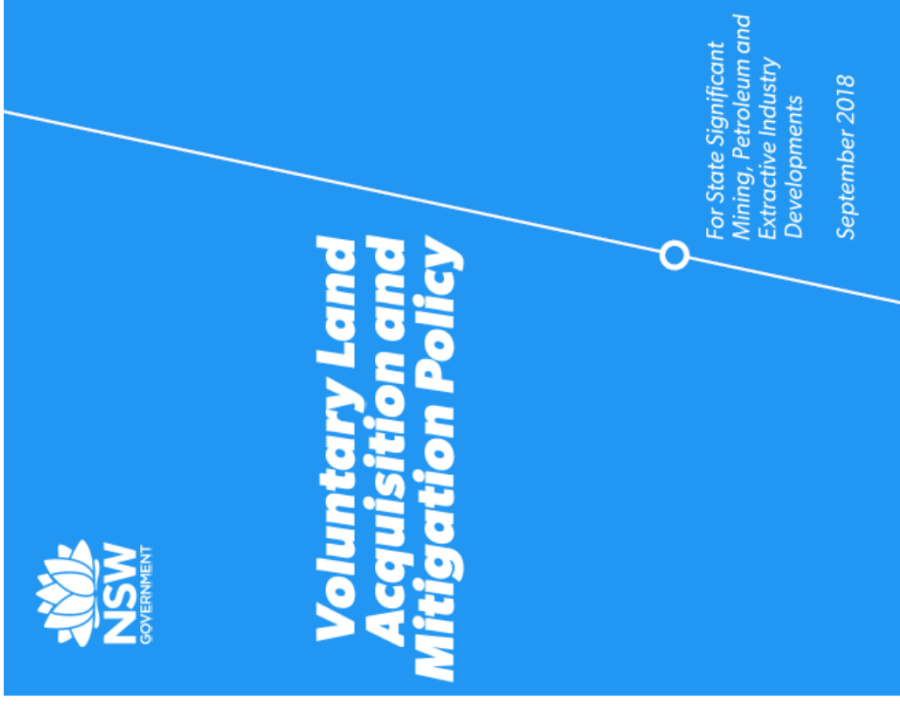
- Noise impacts for rail lines assessed using the Rail Infrastructure Guidelines.
- Noise limits for private rail sidings are much stricter compared with mainlines.
- Noise projections based on worst atmospheric conditions.
- Impacts on all closest residences within acceptable noise levels.
- Ongoing discussions with nearby residents.



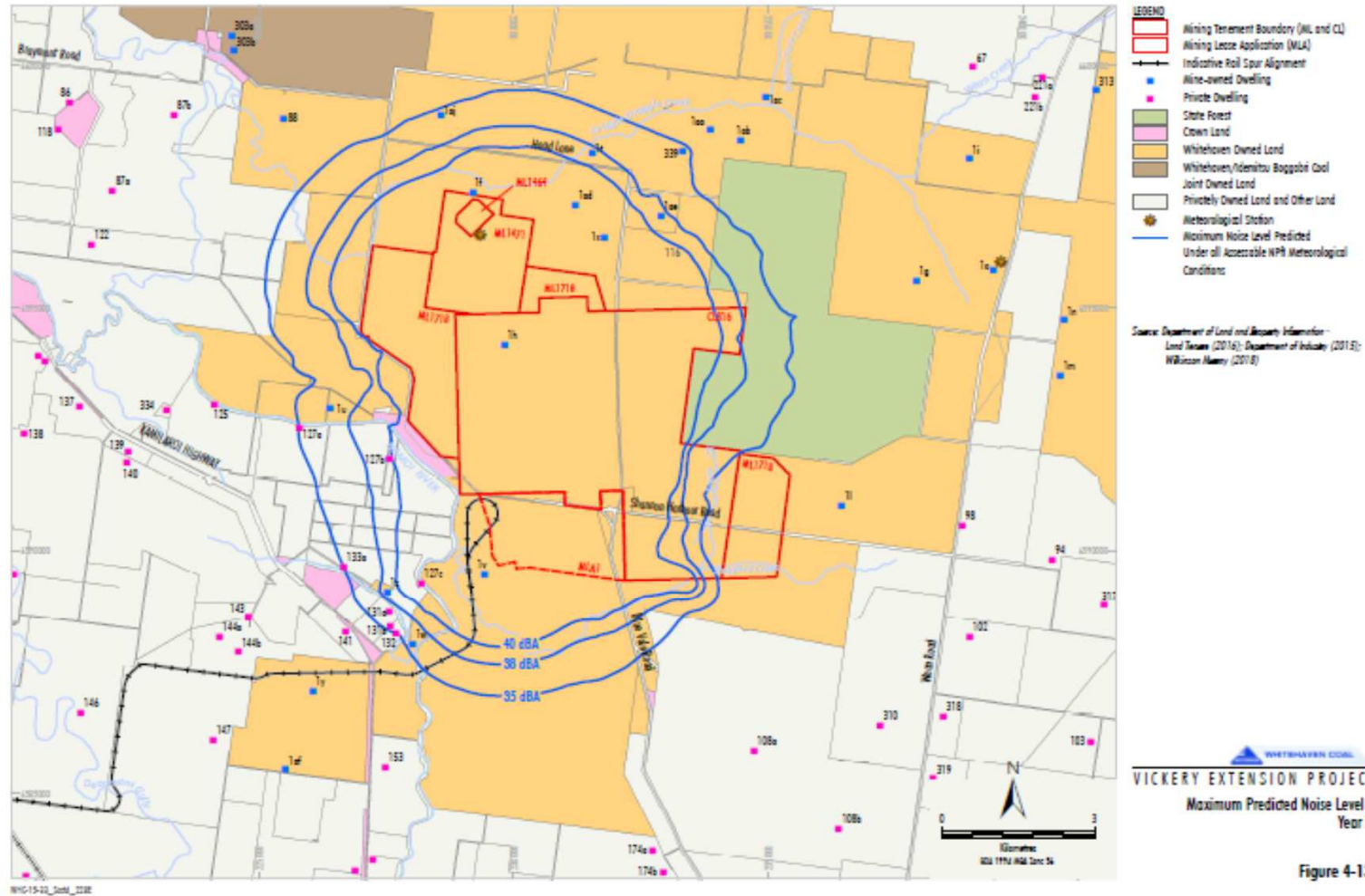
Rail Infrastructure Noise Guideline

**Table 1 – Characterisation of noise impacts and potential treatments.<sup>16</sup>**

If the predicted noise level minus the project noise trigger level <sup>17</sup> is:	And the total cumulative industrial noise level is:	Characterisation of impacts:	Potential treatment:
All time periods 0-24B(A)	Not applicable	Impacts are considered to be <b>negligible</b>	The exceedances would not be discernable by the average listener and therefore would not warrant receiver based treatments or controls
All time periods 3-5dB(A)	<ul style="list-style-type: none"> <li>← recommended amenity noise level in Table 2.2 of the NPfI; or</li> <li>&gt; recommended amenity noise level in Table 2.2 of the NPfI, but the increase in total cumulative industrial noise level resulting from the development is ≤1dB</li> </ul>	Impacts are considered to be <b>marginal</b>	Provide mechanical ventilation / comfort condition systems to enable windows to be closed without compromising internal air quality / amenity.
All time periods 3-5dB(A)	> recommended amenity noise level in Table 2.2 of the NPfI, and the increase in total cumulative industrial noise level resulting from the development is >1dB	Impacts are considered to be <b>moderate</b>	As for marginal impacts but also upgraded façade elements like windows, doors or roof insulation, to further increase the ability of the building façade to reduce noise levels.
Day and evening >5dB(A)	← recommended amenity noise levels in Table 2.2 of the NPfI	Impacts are considered to be <b>moderate</b>	As for marginal impacts but also upgraded façade elements like windows, doors or roof insulation, to further increase the ability of the building façade to reduce noise levels.
Day and evening >5dB(A)	> recommended amenity noise levels in Table 2.2 of the NPfI	Impacts are considered to be <b>significant</b>	Provide mitigation as for moderate impacts and see voluntary land acquisition provisions above.
Night >5dB(A)	Not applicable	Impacts are considered to be <b>significant</b>	Provide mitigation as for moderate impacts and see voluntary land acquisition provisions above.



# Noise Contours

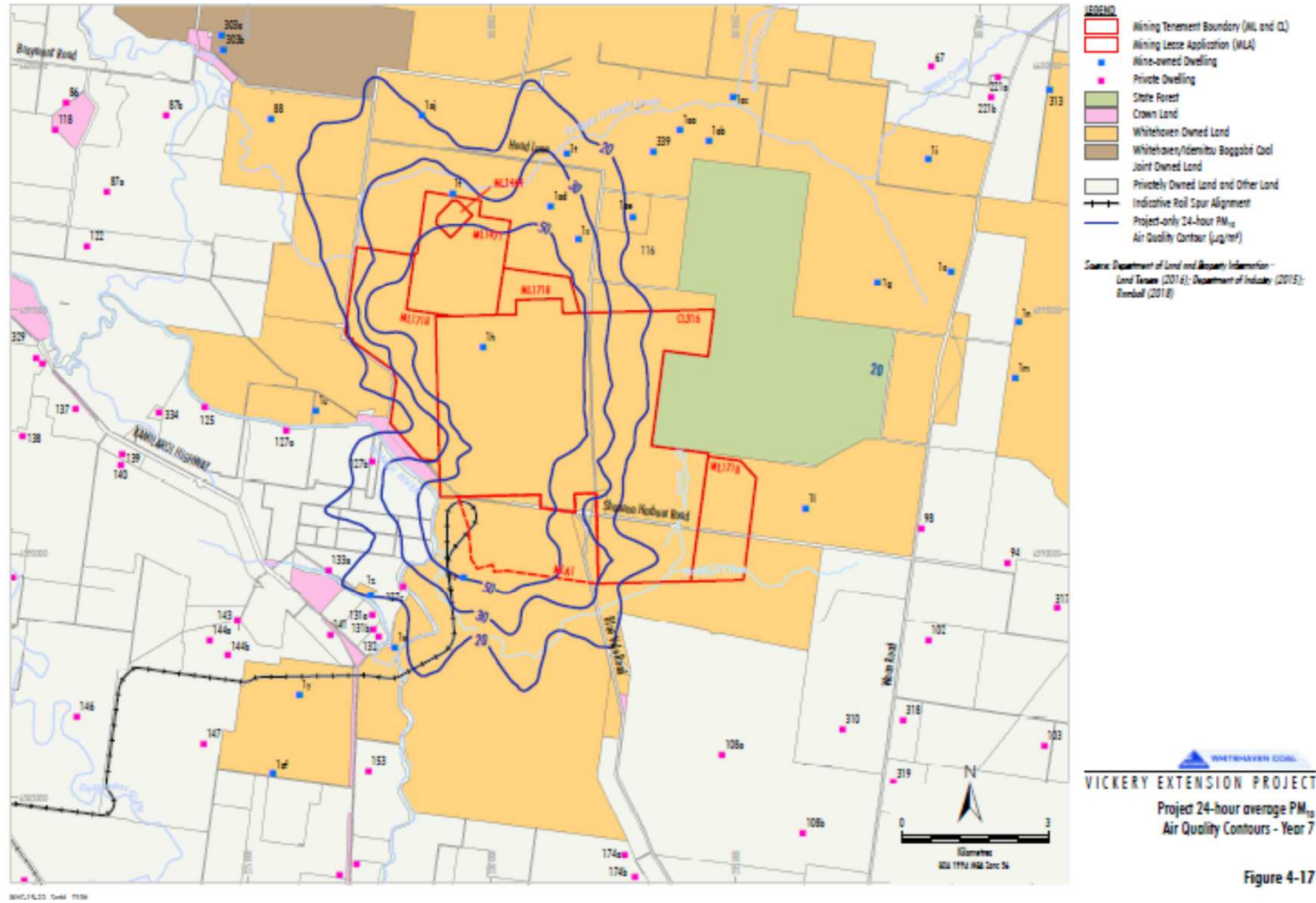


**Table 3 – Particulate matter acquisition criteria<sup>21</sup>**

<b>Pollutant</b>	<b>Averaging period</b>	<b>Acquisition criterion</b>	<b>Impact type</b>
PM <sub>2.5</sub>	Annual	8 µg/m <sup>3</sup> *	Human health
PM <sub>2.5</sub>	24 hours	25 µg/m <sup>3</sup> **	Human health
PM <sub>10</sub>	Annual	25 µg/m <sup>3</sup> *	Human health
PM <sub>10</sub>	24 hours	50 µg/m <sup>3</sup> **	Human health
Total suspected particulates (TSP)	Annual	90 µg/m <sup>3</sup> *	Amenity
Deposited dust	Annual	2 g/m <sup>2</sup> /month**	Amenity
		4 g/m <sup>2</sup> /month*	

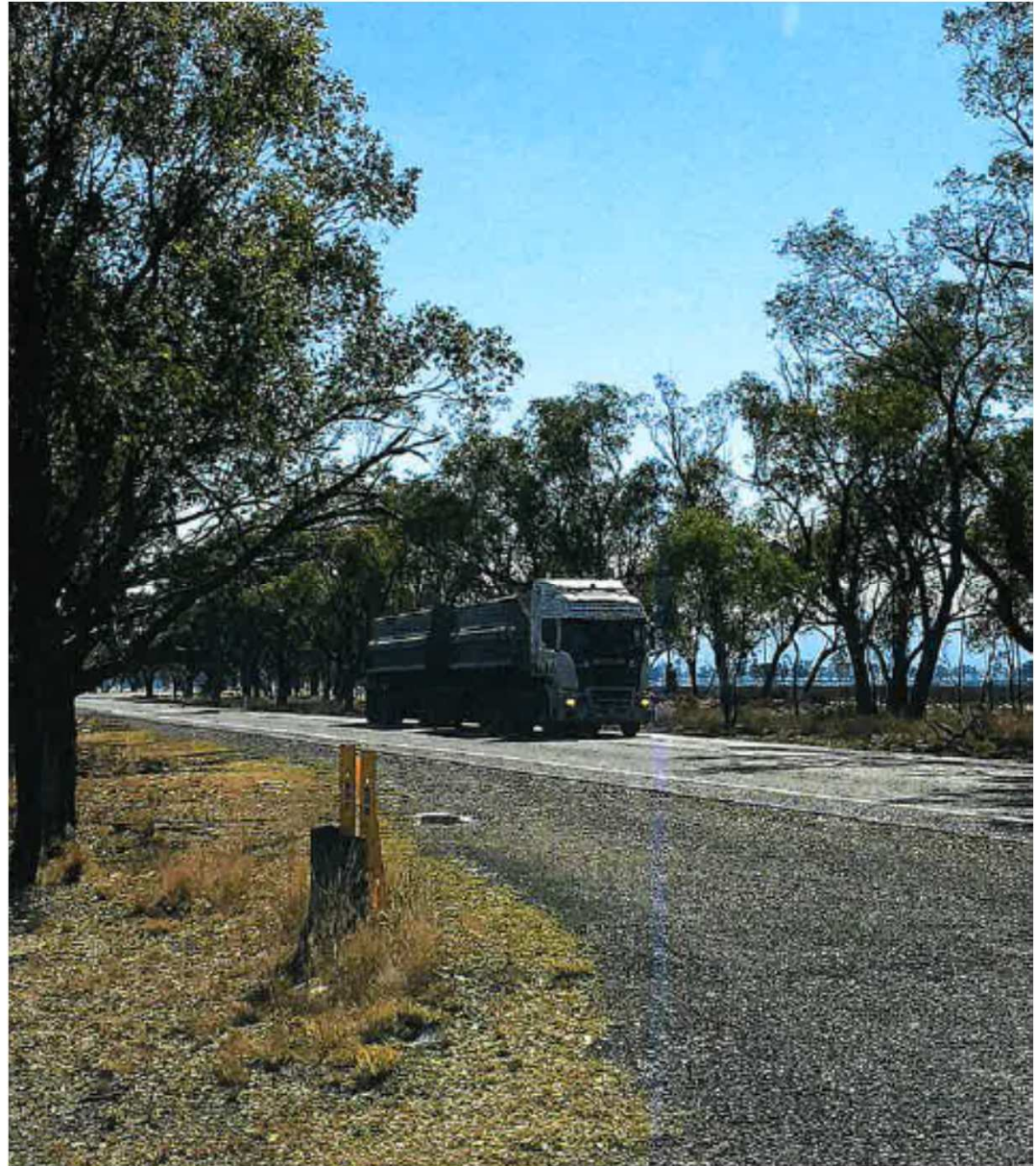


# Air Quality Impacts



# Road Transport

- Fully commissioned on site CHPP will enable coal trucking on Bluevale Rd to be discontinued.
- Operational access from employees will be via Bluevale Rd from the south, Rangari Rd and WHC Haul Rd from the west and north and Rangari Rd and WHC Haul Rd from the East.
- Construction traffic via Rangari Rd and WHC Haul Rd and Kamilaroi Highway.



# Visual

- Western Overburden dump will have minimal visibility from Kamilaroi Highway



Existing View



Existing View with Simulation Outline - Year 7

WHITEHAVEN COAL  
VICKERY EXTENSION PROJECT  
Existing View and  
Visual Simulation Outline (Year 7) -  
Kamilaroi Highway (VP8)

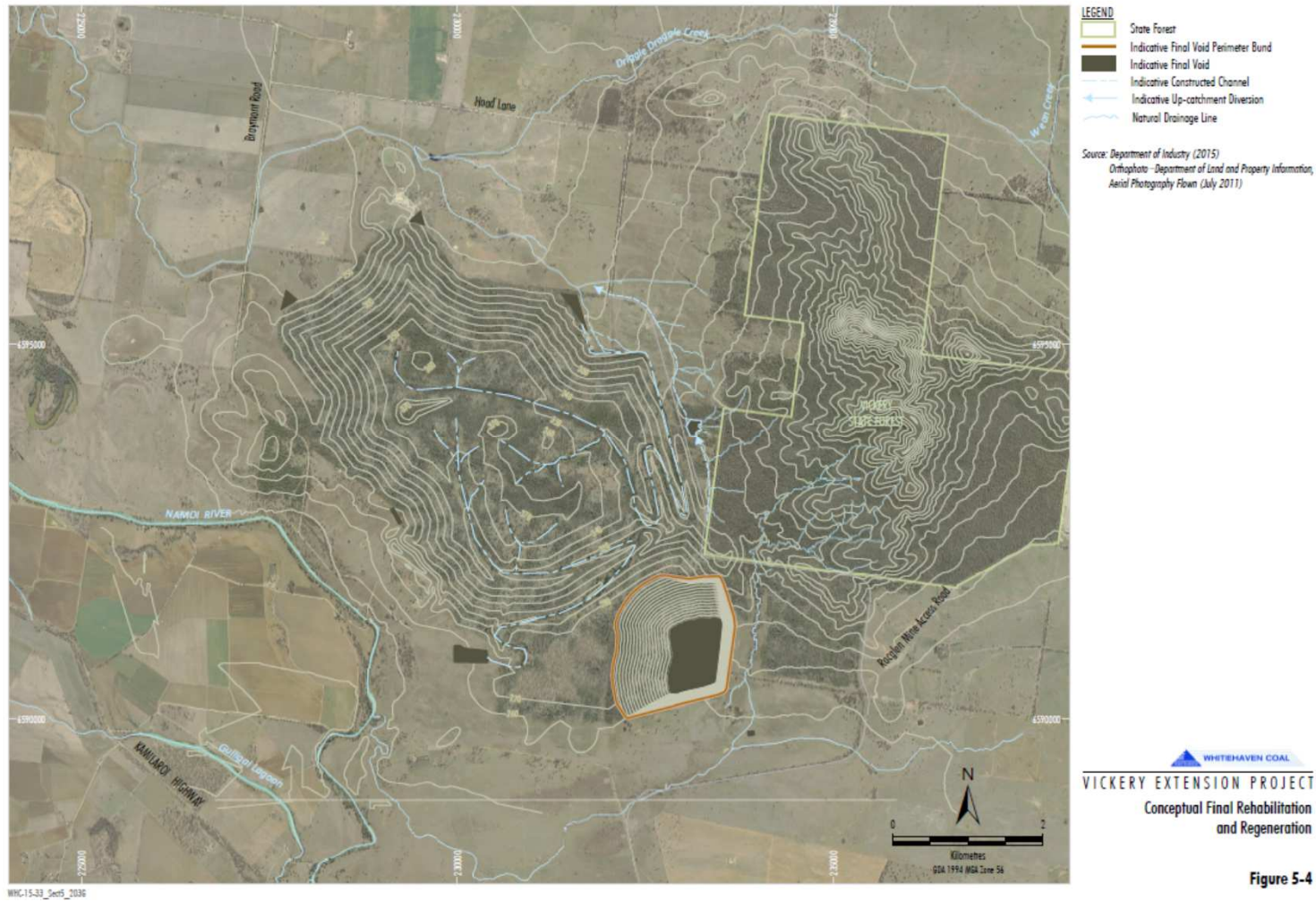
# Rehabilitation

- Whitehaven takes its rehabilitation responsibilities very seriously



Plate 5-4 Canyon Coal Mine - Cover Crop Establishment on Waste Rock Emplacement

# Rehabilitation concept for Vickery



# Community Engagement

Whitehaven has engaged extensively with the community about the Vickery Extension Project through consultation with a range of local stakeholders including residents, farmers, other landholders, councils, businesses, and local community and government representatives.

## COMMUNITY ENGAGEMENT

- More than 350 interactions and meetings with local people
- Regular face-to-face meetings and updates with more than 25 affected landholders
- Comprehensive SIA Assessment

## OUTREACH EFFORTS

- Community information day
- One-one-one meetings
- Regular newsletters
- Advertisements in local papers about Aboriginal heritage consultation

## INDEPENDENT RESEARCH

- 66% of people in Gunnedah support mining.
- Across the largest communities in North West NSW, 70% agree Whitehaven has a positive effect on the local economy

## ENVIRONMENT

- Detailed independent scientific assessments of noise, air quality, groundwater, flood impact, flora and fauna, aboriginal cultural heritage, historical heritage, agriculture, water surface, soil and geochemistry impacts

## LOCAL COUNCILS

- Regular updates and briefings for local Councillors and staff

## NSW AND FEDERAL GOVERNMENTS AND DEPARTMENTS

- More than 30 briefings and letters to NSW and Commonwealth Departments and Agencies
- Briefings to local NSW and federal MPs, Ministers and their staff



# Blue Vale



## Vickery coal mine extension moved away from Namoi River

December 7 2017

- Original Vickery Extension Project proposed scope included reopening the previously mined Bluevale pit.
- Blue Vale Pit's proximity to Namoi River and private residences meant that environmental assessments focused on potential impacts.
- Detailed modelling confirmed that impacts on Namoi River were minimal.
- Nevertheless there were some community concerns expressed to Whitehaven.
- After careful consideration, Whitehaven chose to exclude reopening Blue Vale pit from the Vickery Extension Project scope to mitigate community concerns.

# Summary

## **The Project will bring the following benefits to the local community and NSW:**

- Generate 950 new jobs with about 500 jobs during the construction phase and around 450 jobs during operations. A significant percentage are expected to be created within the NSC.
- Deliver significant net benefits of over \$1.2 billion to people of NSW as well as significant local benefits.
- Create fresh opportunities for Whitehaven to support local businesses and contractors within the Gunnedah Shire.

## **EIS findings:**

- No impact on high value agricultural land
- No measurable impacts on groundwater and the Namoi River
- Incremental noise and air quality impacts are within established thresholds
- Rail spur impact within allowable levels on the Namoi River floodplain
- Site will be progressively rehabilitated and result in the filling of three existing voids.
- Growth in Gunnedah in terms of population and business considerably enhanced..





MEDIA RELEASE

19 June 2018

# Mining royalties contribution to the NSW economy

## 2018-19 NSW STATE BUDGET

### RECORD MINING ROYALTIES HELPING PROVIDE BETTER SERVICES IN NSW

Today's NSW State Budget shows how strong economic management can deliver significant returns for the people of NSW, including for regional communities.

The Budget also confirms the importance of a diverse economy beyond Sydney, with record mining royalties helping fill a decline in stamp duty revenue due to a slowing Sydney property market.

"Royalties from the mining sector have been revised up by \$813 million, and will deliver a record \$1.8bn in this year alone, and another record \$2 billion next year to help fund improved services across the state," NSW Minerals Council CEO Stephen Galilee said today

Mining royalties are expected to deliver around \$7.4bn in revenue over the next four years.

"The \$1.8 billion in royalties from the NSW mining sector in 2017-18 are equivalent to almost half the 2017-18 Budget surplus, and the further \$7.4 billion in royalties expected to 2021-22 will deliver over \$1 billion more than the total projected Budget surpluses for the next four years."

"Alternatively, this \$7.4 billion in mining royalties would pay for the bulk of the NSW Government's key Budget commitments on education, including the \$6 billion commitment to fund 170 new and upgraded schools and the \$500 million plan to deliver air-conditioning in 1000 schools across NSW."

# Mining Boosts Local Employment

Appendix



# THE COURIER

www.thecourier.net.au

THURSDAY, JULY 26, 2018 • VOL. CV NO. 69

PROUDLY SERVING THE NARRABRI SHIRE FOR 105 YEARS

PHONE: (02) 6782 1011 • \$1.60 inc GST

**VOTE FOR THE SHIRE'S CUTEST BABY**  
PAGES 12, 13

**KNIFE AND FORK**  
PAGE 9



**KASEY CHAMBERS CONCERT**  
PAGE 8



## Coal powers local jobs

\$21.8 million in contracts to three Narrabri businesses employ 42 people

The Narrabri Valley coal industry is powering employment in Narrabri Shire, providing jobs which are helping support families and small businesses as the drought bites deeper into the local economy.

Whitehaven Coal has recently announced that three local

businesses have been awarded almost \$22 million worth of contracts bringing 42 jobs to Narrabri and the district. Narrabri-based family businesses WTC Earthmoving, Specialised Civil Services and Namsol WasteCorp will provide plant and personnel for Whitehaven's mines with contracts

running up to four years.

Specialised Civil Services has employed 30 local people, Namsol WasteCorp has put on 13 and WTC Earthmoving has employed 11.

The local companies won the contracts in a competitive environment. The benefits to the local economy

range from the inflow of money from wages, to purchases of groceries, shopping at local stores, restaurants, pubs and clubs.

"We want to ensure that as Whitehaven grows and develops, local communities and businesses share in the benefits," said Whitehaven chief

executive Paul Flynn.

"The three new, long term contracts awarded to local Narrabri businesses are worth \$21.8m and will provide genuine growth opportunities for these enterprises and support many more jobs in local businesses."

Continued page 5

**RIGHT:** Three local businesses have secured new contracts worth almost \$20 million, creating 42 jobs, to provide services to Whitehaven Coal. From left, Chris McGlum, Specialised Civil Services; Will Childs, WTC Earthmoving; Nick McGlum, Specialised Civil Services and Jack Campbell, Namsol WasteCorp.



# EIS Assessment Process

1. EIS Public Exhibition.
2. DPE – Issues Report.
3. IPC – Public Hearing.
4. IPC – Hearing Report.
5. Whitehaven – Response to:
  - Submissions
  - IPC Report
6. DPE – Whole-of-Government Assessment Report:
  - Gunnedah and Narrabri Councils
  - Other Government Agencies (e.g. EPA, Water, OEH)
  - Independent Experts
7. IPC – Final Public Hearing and Determination
8. Commonwealth – Minister’s Determination

SR 17 Narrabri 35

17 Maules Ck 18 Boggabri 18

[www.whitehavencoal.com.au](http://www.whitehavencoal.com.au)

